

# BFI Measure



## ■ Specification

Model number	SM506 (Supersonic Measure 506)
Product name	BFI Measure Cellu Check Plus (Ultrasound image measurement device)
Construction	Main device, Probe, Probe stand, AC code, USB cable, Attachment parts, Sonic water, User manual, Certification, Check sheet
Measurement parts	Upper arm, Abdomen, Waist, Front thigh, Back thigh
Measurement information	1 millimeter (mm), Water retention (%)
Communication method	USB
Measurements items	Fat thickness, Muscle thickness, Cell check, FAT total, FAT%, FAT kg, Body Mass Index, Muscle weight, Obesity index, Basal metabolism, Body Balance, Metabolic, Diet plan, Body balance, Delete calorie plan, Food & Exercise plan, Target BMI, Target simulation, Image simulation, Save measurement date, Progress data, Check sheet (Print sheet)
Result check sheet	Special paper (check sheet A4size)
Measurement sound	Touch panel sound attached *It could be changed by PC operation.
Result Save	Image, a numerical saved
Measurement method	Pulse method Result Save Image, a numerical saved
Probe	3.5Mz 64elements linear model
Measurement width	About 75mm
Measurement depth	About 80mm
Size	Main unit 272.4mm(W) × 67.2mm(D) × 216.2(H) mm Probe 80.9mm(W) × 179mm(D) × 75.9(H)mm Probe cable 1.7m Probe stand Inside 102mm(W) × 40mm(D) × 47(H)mm Outside 94mm(W) × 15mm(D)
Weight	Main unit 3.5Kg (included probe) Probe 300g (included cable)
Soft ware	Body Fat Index software
Product name	BFI506
Method	USB memory *The management software is included in normal constitution.

## Operation check

PC PC-AT Compatible machinery (couldn't use Macintosh)  
OS More than Microsoft Windows 7  
Memory More than 1GB  
Screen resolution 1024 × 600 dot

Others  
\*The software is copied from the USB memory and use it.  
\*USB memory has security capability. If it take off from the PC, it cannot work.

## ■ Option

Touch panel, printer

## ■ Accessories



Power supply cord



USB cable



probe case



BFI sonic water

The BFI measure is non-medical equipment. It is not possible to use for the medical practice, the medical diagnostics and as like purpose.



Fat Muscle Cellulite & Health Check System



Ultrasound image measurement device

# BFI Measure





BFI measure could see subcutaneous fat, muscle, cell fat, bone with ultrasound visual. And also, BFI measure could measure by an automatic measurement and analyze the quality of them. It analyze body composition with extremely accurate, and could instruct and counsel with persuasiveness.

Seikosha Co., LTD. studied ultrasound from 1990 and analyzed composition of 8cm under the skin and announced the new body composition analysis by the latest technology and abundant software. Thickness of fat and the muscle is measured automatically only by appropriating a small probe to the measurement part of body and analyze the quality of cellu fat. It is possible to use sports, beauty, medical markets as the analyzer equipment which instruct exercise, diet, Rehabilitation, Obesity management and Weight-loss program.

Technology

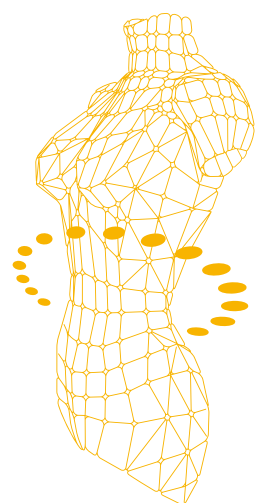
High performance Hand switch probe

The probe sensor enabled the high technological image exchange level by rapidly improvement of the element and the oscillator using B mode of 3.5Mz comparing with a past type.



Market

It is used in various markets.

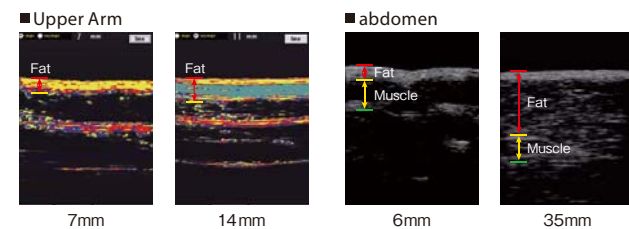


- Exercise plan & Fitness
- Diet Plan & Slimming Center
- Weight Loss Plan & Clinic
- MusclePlan & Sports Athlete
- Cellulite Plan & physical therapist

Auto analyze

This is the automatic measurement for fat & muscle thickness, and cellu fat.

It displays fat, a muscle, a cell fat in a color chart. The effect measurement of exercise and the weight loss is clear at a glance. It is possible to confirm the decrease of not only the percent of body fat but also the subcutaneous fat by a visual.



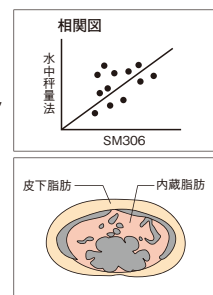
Evidence

It measures by the ultrasonic method with high accuracy.

The technology of SM506 BFI Measure

1. Correlation with the Underwater weighting capacity method.

- 1) By three points method, there is high precision of 0.89 and about 90%.  
Measurement part: Navel circumference, Upper arm, Front thigh
- 2) By one point method, there is high precision of 0.83.  
Measurement part: Upper arm
- 3) STAT: Quantity of subcutaneous fat VFAT: Quantity of visceral fat RATE: Ratio of visceral fat



2. It is announced in various societies.

- 1992 A physical strength society Professor Mr. Kitagawa  
「A ultrasound image measurement device relations with the caliper」
- 1993 A physical strength society Professor Mr. Uasa  
「Distribution and the gross weight of the subcutaneous fat in the body」
- 1993 A physical strength society Professor Kitagawa  
「Health Related Physical Fitness test as The measurement method of the quantity of body fat」
- 1997 A Health sciencesociety Professor Mr. Sto  
「The development of a ultrasound crossing photography system」
- 2005 A obesity society Professor Mr. Aoki  
「Fat thickness by the automatic measurement-style ultrasound SM306 and BFI」

Body Fat Index.

The BFI index guide the personal plan, furthermore detail clearly.

BFI Measure is equipped the Body Fat Index (BFI).  
①BFI Balance ②Fat % ③FAT Thickness & Orange Peel ④Diet Calorie Plan will be able to measured as a measurement items. It is possible to management customer, patient, client and analyzes and evaluates the 6 blocks balance of Body Figure balance, Body's figure evaluation, Part of Fat Thickness balance, Diet Calorie Plan.

BFI (Body Fat Index) instead of BMI (Body Mass Index)

The BMI is calculate from weight and height.  
(BMI=Weight (kg) / height (m<sup>2</sup>))  
But if there is same BMI people, one people has big abdomen, the other people has big arms and legs. It is related their lifestyle. BMI is not reflected body fat at all. Therefore, it could not possible to advice the counseling with body balance details. The weight and Fat percentage are insufficiency for details counseling. It find just obesity level and it couldn't find body balance for part of body.  
The BFI is added fat thickness with weight and height by ultrasound. Where the fat thickness is most big? How is the body balance? The BFI could find the figure and body balance and could advice details date of customer.

**Measurement Item**  
①BFI Balance ②Fat % ③FAT Thickness & Orange Peel ④Diet Calorie Plan It is possible to measure four items measurement.

**Ultrasound Image**  
It project a ultrasound image on PC and could see subcutaneous fat, muscle, cell fat, bone with ultrasound visual. It is automatic measurement for fat, the muscle, and cellu fat.

**Measurement Parts**  
It is measured fat thickness and muscle for five parts of Upper arm, Abdomen, Waist, Front thigh, Back thigh and analyze the cellu fat.

**Body's Figure Evaluation**  
It is evaluated your body's figure evaluation from the result and indicated advice & analysis comment.

**Part of Fat Thickness balance**  
You could find the part of Fat thickness balance (BFI=part of BMI) on this list. It indicates that where is your fattest part and where is your thinnest part and evaluates BFI (part of BMI).

**Progress Data (Check my data)**  
It is saved your date of every measurement. If you click the measurement data, you could find the ultrasound images which you measured

**Diet Calorie Plan**  
You could calculate calorie plan. At first, please input "TARGET WEIGHT", after that, please input term, you could find the calorie per day. If you input the calorie, you could find the term.

**Simulation Image**  
If you click the "SIMULATION" button, you could find the future slim body image. If you change the BMI, you could find the more slim image or more big image.

**Body's Figure Balance**  
After calculation, it will be indicated the result of 6 blocks of FAT% and BMI. A vertical axis is FAT%, a cross axis is BMI. You could find the balance on this screen.

The analysis of the body composition is printed in the check sheet. It will be able to do best counseling to use sports, beauty, and medical markets as the analyzer equipment, which instructs exercise, diet, Rehabilitation, Obesity management and Weight-loss program.

- ①Figure analysis  
A list shows analysis of the body composition, and it evaluated the body balance. It indicated result in this time and before time.
- ②Each part of fat thickness analysis  
A list shows the actual survey value of the subcutaneous fat and indicated Body Fat Index (BFI=part of BMI). It compare the same BMI person and becomes clear diet point of body part.
- ③Result of your Hypodermic fat type  
It could printed visual of ultrasound after measurement and indicated fat thickness and muscle thickness.
- ④Cell Fat  
It evaluates the cellu fat level and could use the care, treatment and exercise.
- ⑤Each part of muscle thickness analysis  
I display the actual survey value of the muscle and could compare the average.
- ⑥advice for weight control  
It is advised the healthy weight control, for reduction (100Kcal example), ten articles of weight control.

